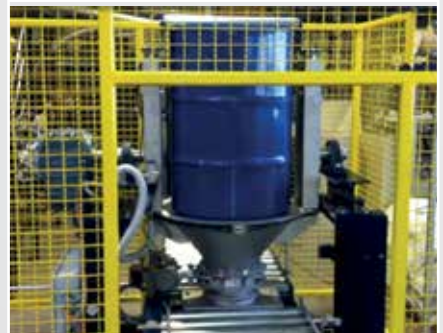


RAW MATERIAL INTAKE

**B&K**  
WÄGE- UND ANLAGENTECHNIK

---





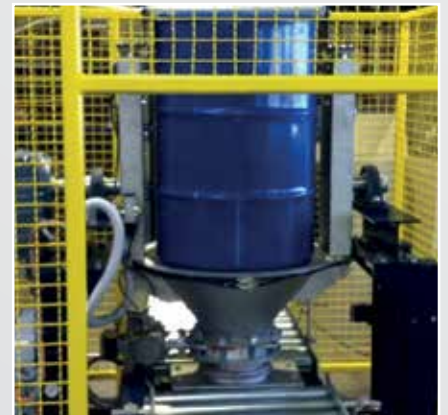
## BIG-BAG EMPTYING SYSTEM

BIG BAG emptying stations with pneumatic or mechanical removal of the raw material, as well as emptying directly into a day tank.



## BAG EMPTYING SYSTEM

Emptying station for the laying in of bags of any kind as well as combined systems for the laying in of different package shapes.



## BARREL EMPTYING SYSTEM

Barrel emptying systems, automatic, semi-automatic or manually operated. We design and produce according to your wishes and your individual production processes.

---

# B&K

## RAW MATERIAL INTAKE

---

| BIG BAG EMPTYING STATION |  
| BAG EMPTYING STATION |  
| BARREL EMPTYING SYSTEM |



Construction  
Production  
Transport / Logistics  
Assembly  
Commissioning

BIG-BAGs, bags, containers, barrel emptying stations and tank scale emptying systems are used for raw material intake, both for solids as well as for liquid components.

Material	Stainless steel, normal steel, aluminum, textile, rubber
Measurements	Freely dimensioned
Types of packaging	Barrels, BIG-BAG, Octabins, sacks, tanks, containers

# B&K

WÄGE- UND ANLAGENTECHNIK

---

**B&K**

Wäge- und Anlagentechnik GmbH

Auf'm Rottland 8

D-57577 Hamm

Fon: +49 2682 9669 - 190

Fax: +49 2682 9669 - 192

eMail: [info@bk-anlagentechnik.de](mailto:info@bk-anlagentechnik.de)

[www.bk-anlagentechnik.de](http://www.bk-anlagentechnik.de)